



Medicine Traceability in a Hospital Environment

Ana Paola Negretto
Pharmacy Coordination at
Santa Joana Hospital and Maternity
Pro Matre Paulista



Grupo Santa Joana

Santa Joana • Pro Matre



Newborn and Women's Health

2012 data:

- 158 neonatal beds
- 313 admission beds
- 65 adults intensive and semi-intensive care beds
- 8 operating rooms
- 16 surgical delivery rooms
- 6 natural childbirth suites
- 26,168 deliveries
- 10,057 surgical procedures





What's the difference?

Retail Pharmacy



Hospital Pharmacy





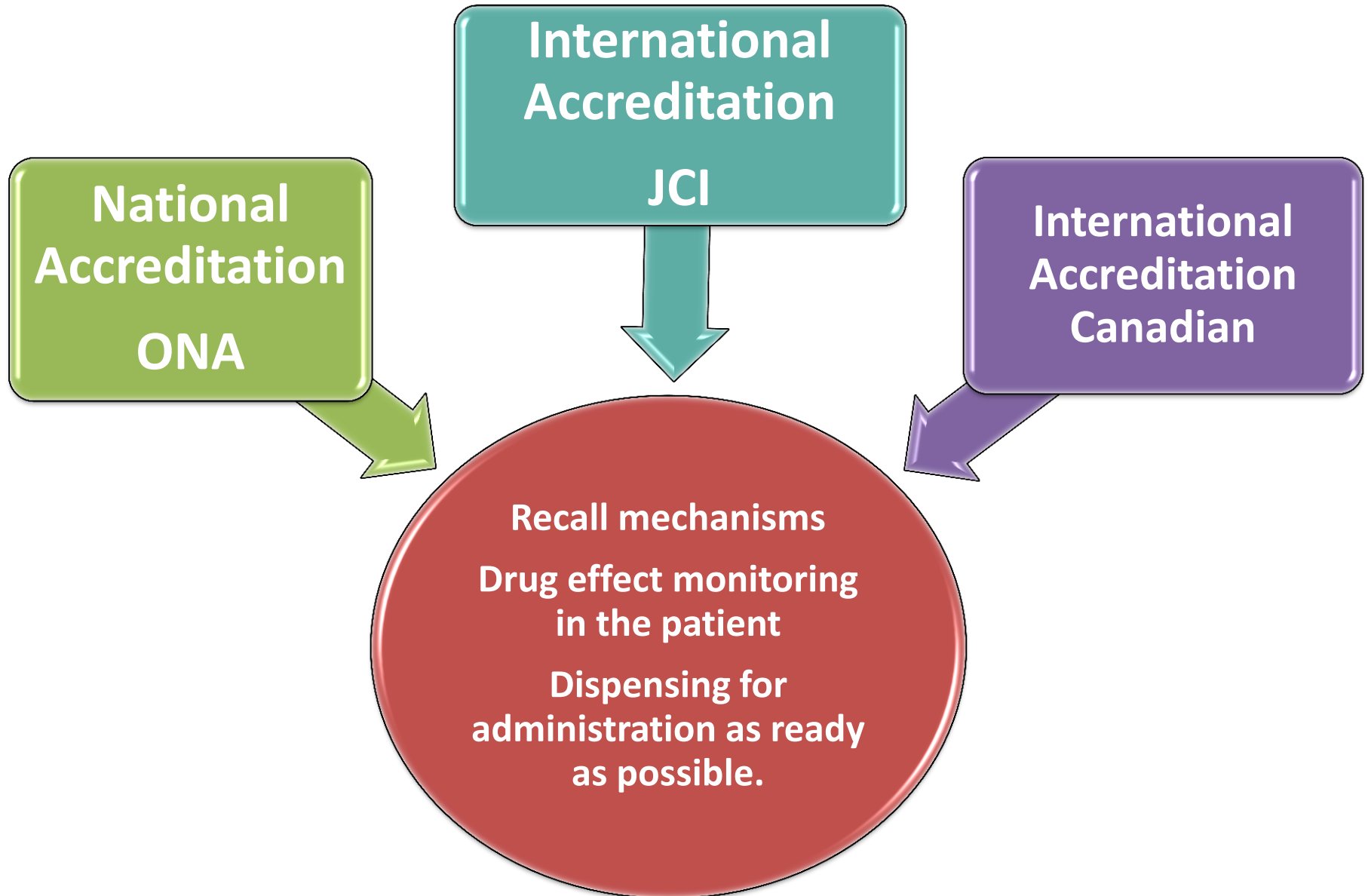
Brazilian Regulation

- Ordinance 801/1998
 - Establishes GTIN + EAN 13 as a standard on secondary package
- RDC 71/2009
 - Establishes rules for drug labelling
 - Security mechanisms on packagings that enable traceability from manufacturing to dispensing...
- Law 11.903/2009
 - Creates the Drug Traceability National System
- Public Consultation 10/2013
 - Traceability rules





Best Practices





Hindrances in the process

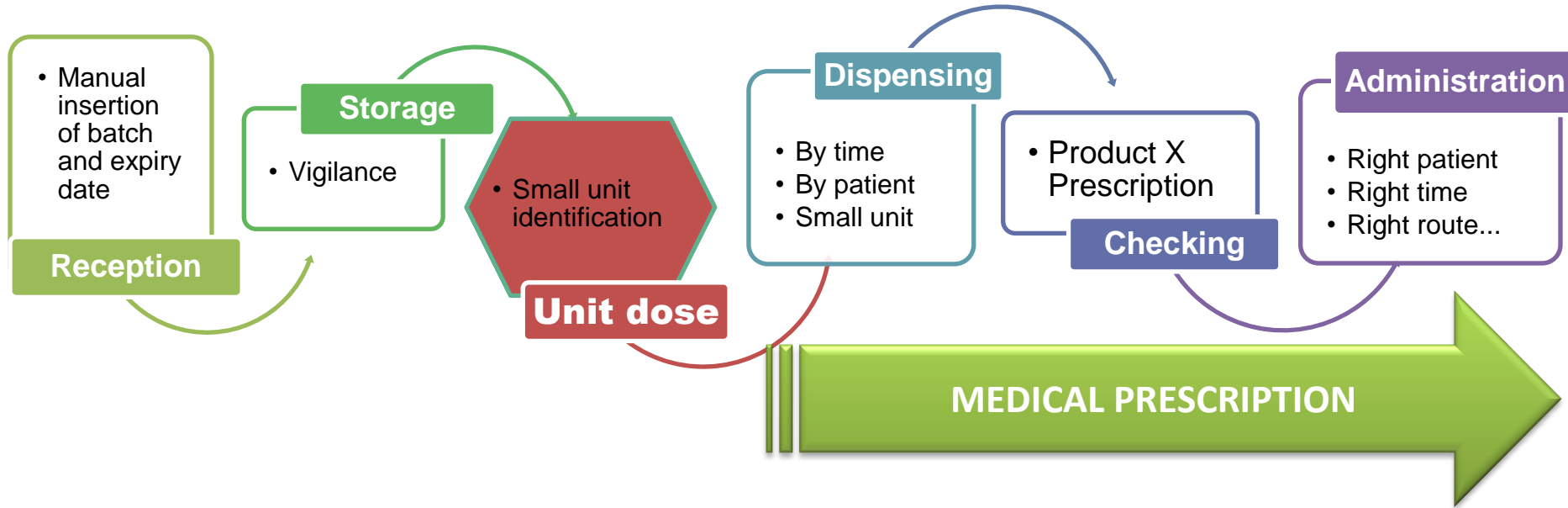


- **Main hindrances:**

- Products have internal codes in each step of the logistics chain (industry – distributor – hospital)
- Manual insertion of batch and expiry date due to the lack of identification.
- Oral solids do not have identification in the unit of use.
 - Commercialization in blister packs – EAN/GTIN – 13 secondary packaging
- Ampoules and vials without bar codes
- Vials for oral liquid - EAN/GTIN- 13 secondary packaging.



Logistics Flow - Hospital

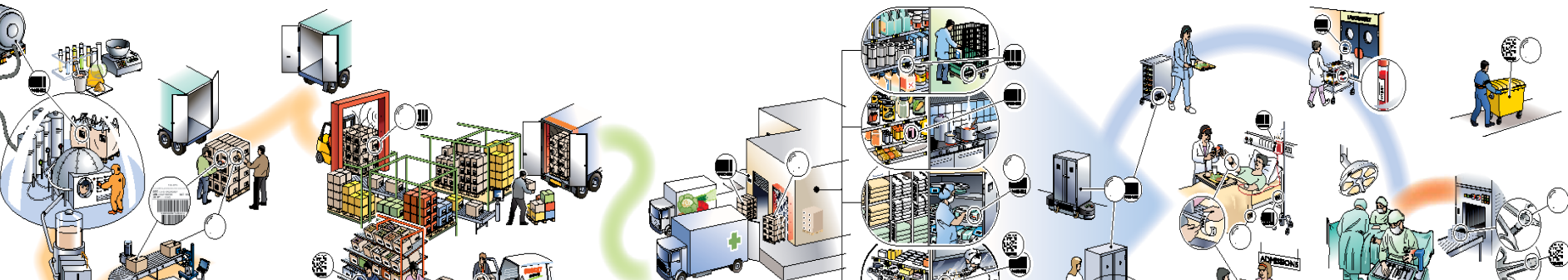


Descrição dos principais processos da cadeia de abastecimento
Cada um destes processos pode ser executado por diferentes organizações ou por uma só entidade

Indústria

Operador logístico

Instalações para tratamento de saúde





Small unit identificaton

Production order



Labelling



Production Release





Manual Process





Production Checking



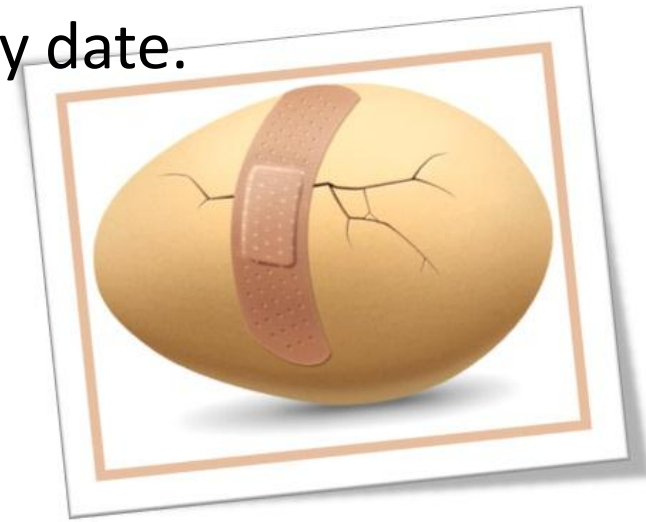


Weak point





- Errors of product identification:
 - System – Manual insertion of batch and expiry date
 - Physical product:
 - Wrong label issuing
 - Identification of the wrong product
- Contamination and product loss
 - Excessive handling
 - 75% reduction of the remaining expiry date.
- Technical responsibility exchange
- Additional workforce costs





Small unit identification:

- Administration errors avoidance:
 - Right patient
 - Right medicine
 - Right dose
 - Product expiry date
- Patient allergic to the product
- Duplicate administration





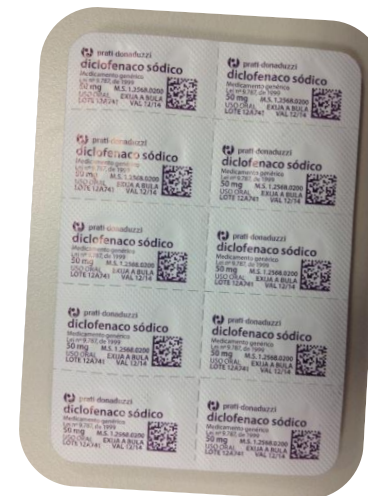
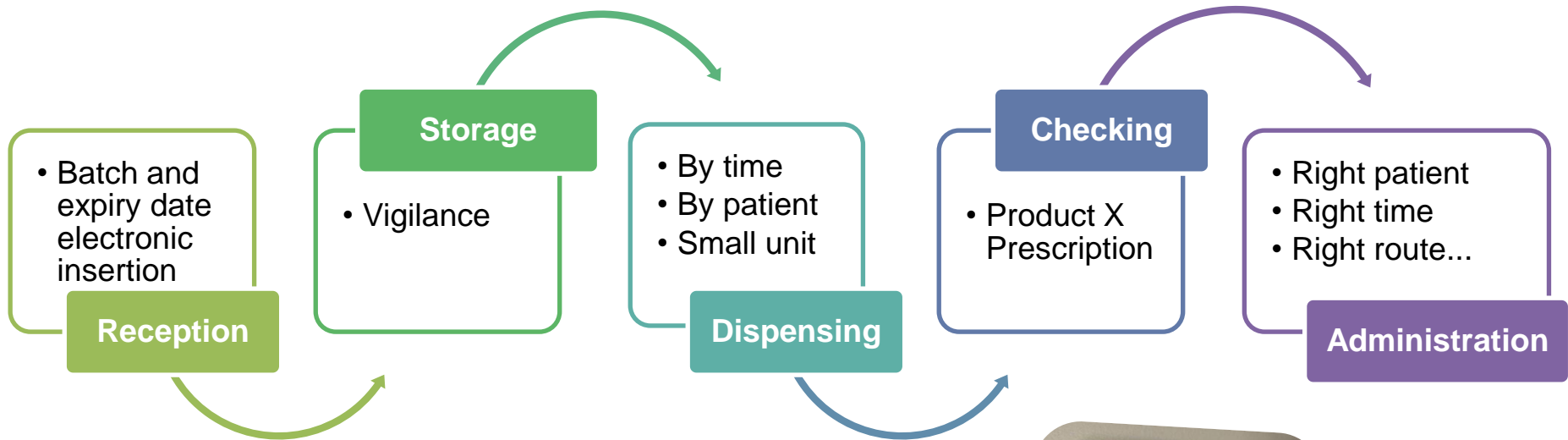
Standards



**GS1 DataMatrix:
GTIN +Batch and Expiry date**



Logistics chain with GS1 DataMatrix identification in the small unit





PROJECT: Partnership with the Pharmaceutical Industry

HC WG GS1 Brasil

- 2005 – The first step GS1 RSS
 - Albert Einstein and Hypofarma
- 2008 – GS1 DataMatrix



- 2009 – Santa Joana / Pro Matre Paulista Hospital and Maternity and Osvaldo Cruz German Hospital
- 2011 – Moinhos de Vento Hospital



Current status: disseminated project in the country

DataMatrix - they began...



...others are joining





- **Efficiency increase and costs reduction**
 - End of the need for relabelling and associated risks
 - Workforce reduction
 - Automated dispensing control
- **Visibility and traceability**
- **Assurance of the 5 rights**
 - Verifying feasibility at bedside through CB
- **Quality requirement:**
 - ISO 9000, ONA (National Accreditation Organization), Joint Commission, etc.



Grupo Santa Joana
Santa Joana • Pro Matre

Video





Thank you!

Ana Paola Negretto
Pharmacy Service Coordination

Address: Rua Dr. Eduardo Amaro, 152 sala 61
Cep: 04010-080 - São Paulo SP
Phone (55-11) 50806020



Grupo Santa Joana

Santa Joana • Pro Matre